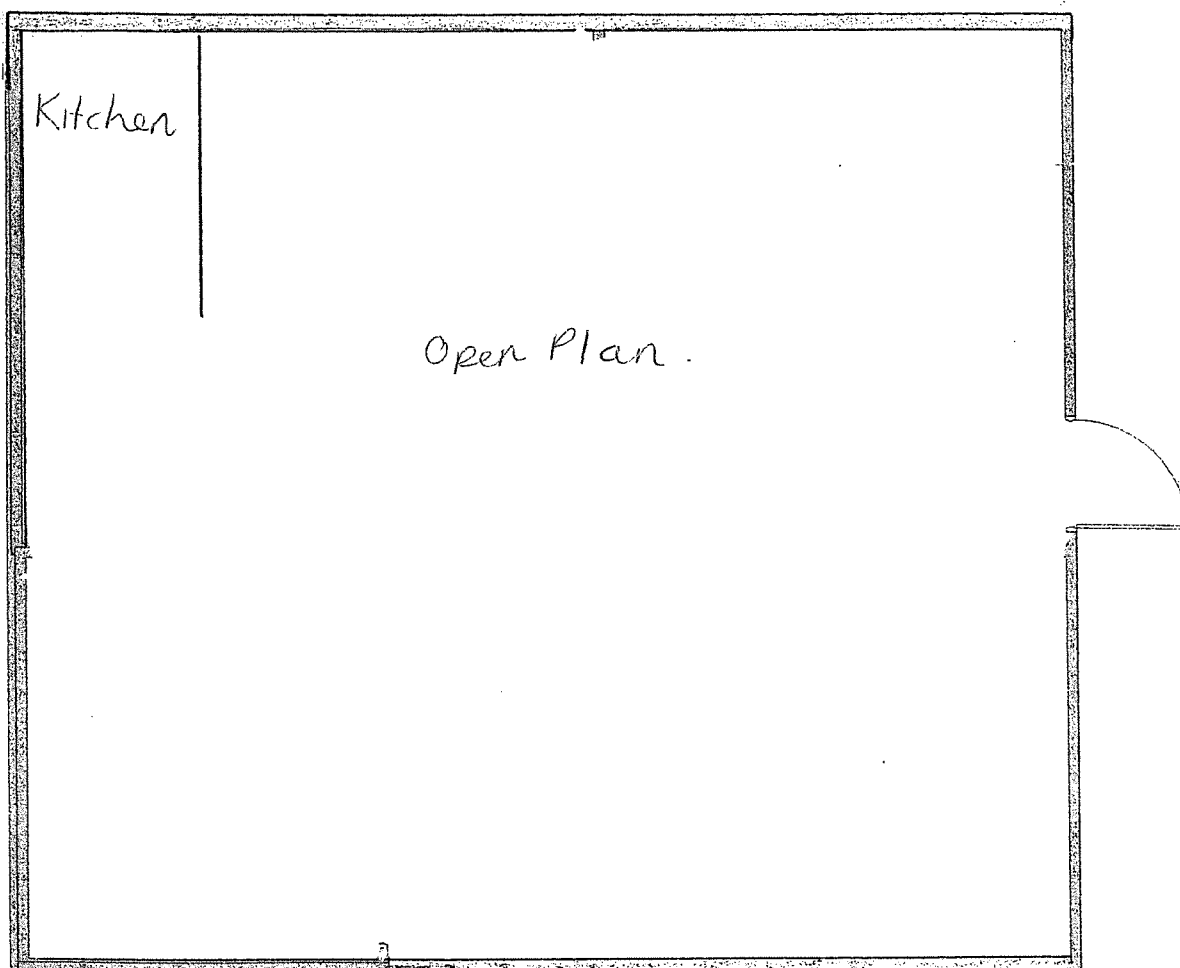
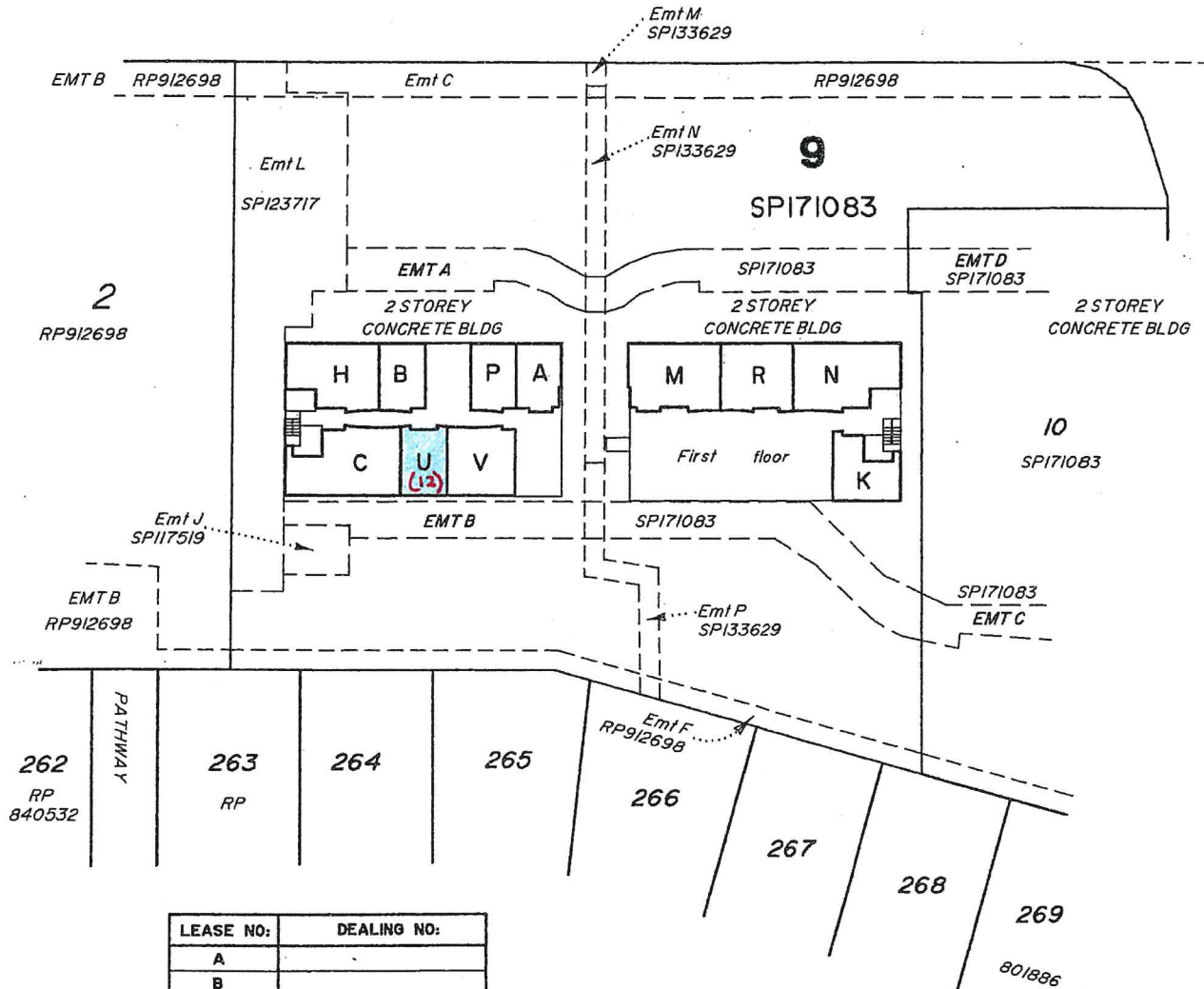


TENANCY 12/76 WISES ROAD



WISES ROAD



| LEASE NO: | DEALING NO: |
|-----------|-------------|
| A | |
| B | |
| C | |
| H | |
| K | |
| M | |
| N | |
| P | |
| R | |
| U | |
| V | |

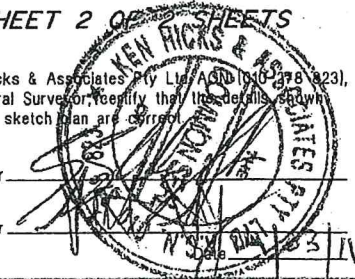
FIRST FLOOR

SHEET 2 OF 2 SHEETS

Ken Hicks & Associates Pty Ltd ACN 106 378 823,
Cadastral Surveyor, certifies that the details shown
on this sketch plan are correct.

Director _____

Director _____



0 10 20 30 40 50 100 Metres
Original Scale 1:1000



PLANNING | SURVEYING | PROJECT MANAGEMENT | COURT APPEALS

Sunshine Coast
PI 07 5443 2844 PI 07 5443 7146
Moreton Bay
PI 07 5495 5318 PI 07 5495 5317
North Queensland
PI 07 4721 3066 PI 07 4721 3088
Info@kenhicks.com.au
Ken Hicks & Associates Pty Ltd ACN 010
278 823 ABN 74 308 405 611 trading as
KHA Development Managers

FERNCO PTY LTD
LEASE MASTER PLAN
LOT 9 ON SP171083
PARISH OF MOOLOOLAH
COUNTY OF CANNING

| | | |
|----------------------------|---------------------------|---------------------------------|
| PARISH MOOLOOLAH | COUNTY CANNING | TITLE REF 50573286 |
| SCALE 1:1000 | DATE 10/03/2011 | DRAWING No 880523-LFF |
| | | AMEND |